

Dear Tallwoods Members

The inaugural Tallwoods Dragon Day was played on Sunday 2 May 2021 with 30 participants playing Tallwoods Country Club in its best possible condition.

Jeff Cutler and I audited the course over a 3 hour period on Friday 30 April 2021 and the results are in!

The analysis makes for good reading and it looks like we are definitely heading in the right direction.

“Tallwoods Dragon Day” and the “Tallwoods Performance Index”

Summary:

The Board has created a monthly event, (“Tallwoods Dragon Day”) to be played on the first Sunday of each month, where Tallwoods Country Club is presented to Members and Visitors in its best possible condition.

The initiative is hoped to create a partnership between Greens Staff and Volunteers to raise all holes to above 70% Performance Index Level by 1 October 2021.

The TPI is designed as a working tool to show Course condition over time to Owners, Members, Green staff and Visitors.

The Entry Area and each Hole is given a rating out of 10 for each of 8 areas.

Hole areas include: Tees, Fairway, Rough, Bunkers, Green, Paths, Tee Surrounds and Green Surrounds.

The aggregate is then presented as a percentage.

Tallwoods Performance Index

As at Friday 30 April, 2021

Conducted by Saxon Williams and Jeff Cutler.

Summary:

AWESOME IMPROVEMENT!!!

We estimate that volunteer work hours reached a staggering 284 hours for the month of April!!! That equates to an additional 8 full time staff for the month of April.

The results are there for all to see. A HUGE thank you to all the volunteers who have participated in the journey of restoring playability and aesthetics back to the golf club.

Major Achievements: Despite the rain event the Tallwoods Performance Index (TPI) shows that we now have 9 holes now with a TPI rating above 60%.

In January to March, only the 16th hole had a rating above 60%.

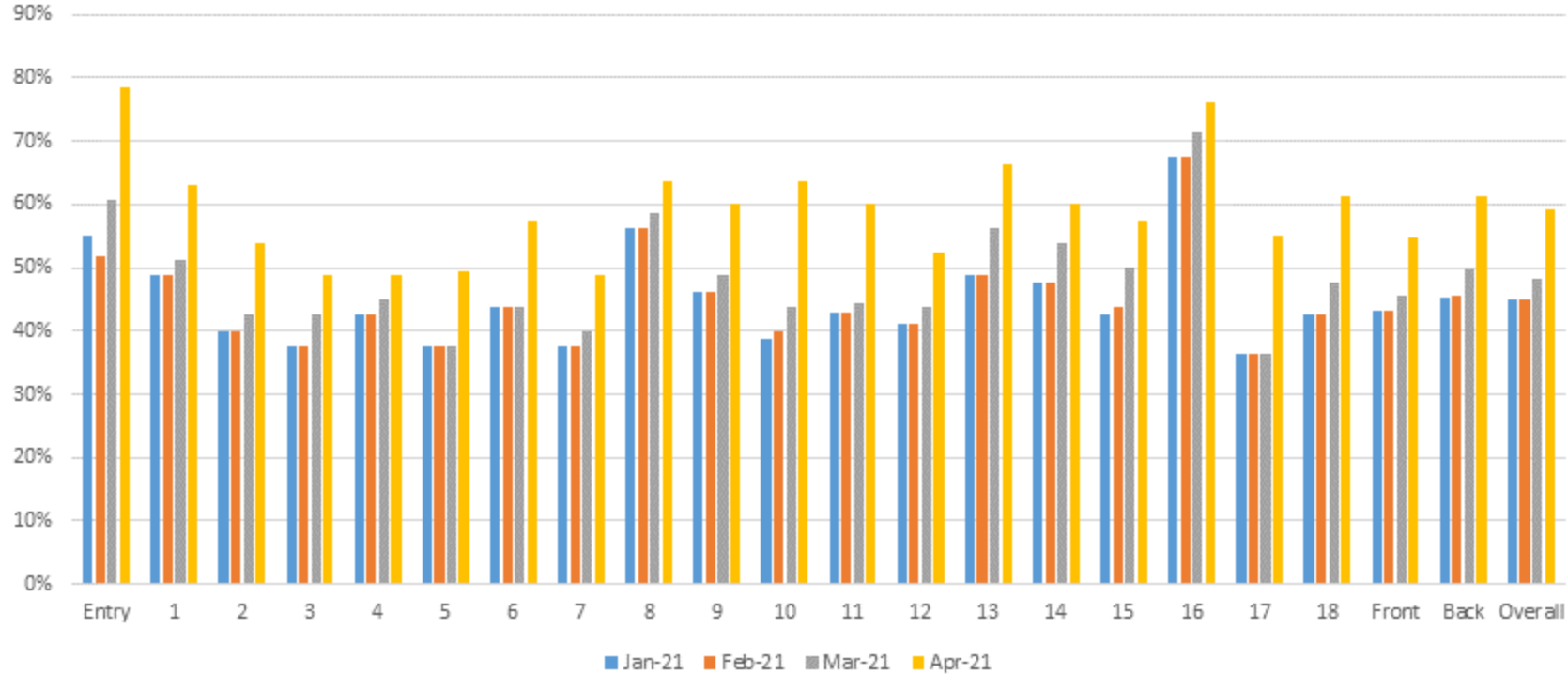
Above 70%: Entry, Hole 16

Above 60%: Holes 1, 8, 9, 10, 11, 13, 14, 18

50% to 59%: Holes 2, 6, 12, 15, 17

40% to 49%: Holes 3, 4, 5, 7

Tallwoods Course Performance Index 2021



Detailed Results by Area and Hole

	Entry Areas	Practice Green	Tallwoods Sign	Hedges	Paths / Tunnel	Practice Nets	Practice Chip / Drive	Pro Shop	Rest /Café Area	Cart Maint Area	Accom	Dam Level	Total	Maximum	Percent
2021															
Jan	6	1	3	7	5	3	4	5	8	6	8	10	66	120	55%
Feb	7	1	2	7	4	3	2	5	7	6	8	10	62	120	52%
Mar	7.5	1	6	6.5	3	4	3	7	9	8	8	10	73	120	61%
April	8	N/A	10	9	7.5	6	4	7	9	8	8	10	86.5	110	79%

Notes: Major Achievements: New Practice Green commenced, Daily Blow vac of tunnel and paths as made the area far more presentable, hedges trimmed and garden beds maintained, Tallwoods sign restored, Practice nets cleaned up, High pressure cleaning of walls and steps has put life into stone work, rose garden has been restored and weeded.

To do: Practice chip area needs restoration and general clean up / whipper snipper and mow of wooded area to the north-east of round-about.

In General: Massive improvement of the Entry from 61% to 79% - Congratulations!

Tallwoods

Hole 1

	Tees	Fairway	Rough	Green	Paths	Bunkers	Tee Surrounds	Green Surrounds	Total	Maximum	Percent
2021											
Jan	4	4	4	6	5	6	5	5	39	80	49%
Feb	4	5	4	6	5	5	5	5	39	80	49%
Mar	6	5	4	6	4	6	5	5	41	80	51%
April	6	6	7	6	6	6.5	5	8	50.5	80	63%

Notes: Major Achievements: Volunteers have poisoned the weeds on the fairway and the greens staff have done a good job of cleaning up the rough areas and around the pond on the right.

To do: Morning glory has taken over the 1st Tee Surrounds. There is a major rut in the middle of the fairway that needs filling in. Many balls are being lost on the first shot in the flooded area to the front of the first tee. Hopefully it will dry out and be mown asap. Weed invasion on 1st green.

In General: Massive improvement of Hole 1 up from 51% to 63% - Congratulations!

Hole 2

	Tees	Fairway	Rough	Green	Paths	Bunkers	Surrounds Tee	Surrounds Green	Total	Maximum	Percent
2021											
Jan	2	2	3	6	5	4	5	5	32	80	40%
Feb	2	2	3	6	5	4	5	5	32	80	40%
Mar	3	3	3	6	5	4	5	5	34	80	43%
April	4	4	4	7	5	6	7	6	43	80	54%

Notes: Achievements: The paths suffered major storm damage and the greens staff have smoothed out the path to the second. Major sediment dropped around the green has been removed and tidied up. Bunkers have improved.

To do: The fairway needs immediate coring and the tees are perhaps the worst on the course (mostly sand). Paths need further restoration. Rope off path near green so Carts do not encroach green surround.

In General: Up from 43% to 54% but the tee area, fairway and rough need further restoration.

Hole 3

	Tees	Fairway	Rough	Green	Paths	Bunkers	Surrounds Tee	Surrounds Green	Total	Maximum	Percent
2021											
Jan	4	1	3	6	5	6	3	2	30	80	38%
Feb	4	1	3	6	5	6	3	2	30	80	38%
Mar	4	3	4	6	5	6	4	2	34	80	43%
April	5	3	6	6	2	6	5	6	39	80	49%

Notes: Achievements: The rough areas have been significantly improved with strong mowing effort around all areas.

To do: The fairway is in need of immediate restoration including coring, weeding and top dressing. The tee areas (ladies top tee in particular) are near the worst on the course (mostly sand). Paths need major restoration.

In General: Up from 43% to 49% but all parts of Hole 3 need major restoration to bring it up to acceptable level.

Hole 4

	Tees	Fairway	Rough	Green	Paths	Bunkers	Surrounds Tee	Surrounds Green	Total	Maximum	Percent
2021											
Jan	6	2	3	6	5	4	4	4	34	80	43%
Feb	6	2	3	6	5	4	4	4	34	80	43%
Mar	5	3	3	6	5	5	4	5	36	80	45%
April	6	5	5	7	3	4	4	5	39	80	49%

Notes: Achievements: The rain has greatly assisted the restoration of the hole. Strong mowing effort to bring rough areas back into play ie short right off tee. The volunteer work around the green has been maintained.

To do: Tee surround has become overgrown. Rough area to the right needs further clean out. Rough area between the 4th and 5thThe fairway is in need of restoration including weeding, coring and fertilizing. Paths need major restoration and roping off area to right of bunker where carts are destroying the green surround. The bunker is one of the most used on the course and needs major restoration.

In General: Up from 45% to 49% but all parts of Hole 4 need major restoration to bring it up to acceptable level.

Hole 5

	Tees	Fairway	Rough	Green	Paths	Bunkers	Surrounds Tee	Surrounds Green	Total	Maximum	Percent
2021											
Jan	4	1	2	6	5	4	5	3	30	80	38%
Feb	4	1	2	6	5	4	5	3	30	80	38%
Mar	4	1	2	6	5	4	5	3	30	80	38%
April	6	2	5	5	3	6	6	6.5	39.5	80	49%

Notes: Achievements: The rough areas have been significantly improved with strong mowing effort around all areas to the right. Good Volunteer work around the Green surround. Bunkers have improved since last survey.

To do: The fairway is in need of immediate restoration including coring, weeding and top dressing. Paths have been badly affected by the rain event and require major restoration.

In General: Up from 38% to 49% but all parts of Hole 5 need major restoration to bring it up to acceptable level.

Hole 6

	Tees	Fairway	Rough	Green	Paths	Bunkers	Surrounds Tee	Surround Green	Total	Maximum	Percent
2021											
Jan	4	5	3	6	5	6	1	5	35	80	44%
Feb	4	5	3	6	5	6	1	5	35	80	44%
Mar	4	5	4	6	4	6	1	5	35	80	44%
April	6	7	6	6.5	4	6	4	6.5	46	80	58%

Notes: Achievements: The green surround playability has improved significantly. Volunteer and green staff effort around the Tee area and Tee surrounds has made a positive impact.

To do: The Paths have suffered major erosion and require restoration between the green to 7th Tee. The Tee surrounds require continued effort to remove weeds and clean up.

In General: Up from 44% to 58% but the tee area, fairway and rough need further restoration.

Hole 7

	Tees	Fairway	Rough	Green	Paths	Bunkers	Surrounds Tee	Surrounds Green	Total	Maximum	Percent
2021											
Jan	3	2	2	5	5	3	5	5	30	80	38%
Feb	3	2	2	5	5	3	5	5	30	80	38%
Mar	3	3	3	5	5	3	5	5	32	80	40%
April	3	3	5	5	6	5	5	7	39	80	49%

Notes: Achievements: The rough areas, bunkers and Green surrounds have improved since last survey.

To do: The fairway is one of the worst on the course and needs immediate cart management and fairway restoration. The Tees are close to the worst on the course (sand) despite the rain event and need an immediate restoration program.

In General: Up from 40% to 49% but all parts of Hole 7 need major restoration to bring it up to acceptable level.

Hole 8

	Tees	Fairway	Rough	Green	Paths	Bunkers	Surrounds Tee	Surrounds Green	Total	Maximum	Percent
2021											
Jan	6	6	4	6	5	6	6	6	45	80	56%
Feb	6	6	4	6	5	6	6	6	45	80	56%
Mar	6	7	5	6	5	6	6	6	47	80	59%
April	6	7	6	7	4	7	7	7	51	80	64%

Notes: Achievements: Further improvement to Hole 8, with effective rough mowing and volunteer work to kill weeds on the fairway.

To do: The entry to the path to the left of green needs restoration. Green weed has taken over the pond and needs to be removed.

In General: Up from 59% to 64% and not far off the Tallwoods 70% target level.

Hole 9

	Tees	Fairway	Rough	Green	Paths	Bunkers	Surrounds Tee	Surrounds Green	Total	Maximum	Percent
2021											
Jan	5	2	4	7	5	5	5	4	37	80	46%
Feb	5	2	4	7	5	5	5	4	37	80	46%
Mar	6	3	4	7	5	5	5	4	39	80	49%
April	6	6	6	7	5	6	6	6	48	80	60%

Notes: Achievements: Excellent volunteer effort to left rough. The rough areas, bunkers and Green surrounds have improved since last survey. Good drain management has taken place to front right of tee .

To do: Continued rough clean up and path restoration.

In General: Up from 49% to 60%.

Hole
10

	Tees	Fairway	Rough	Green	Paths	Bunkers	Surrounds Tee	Surrounds Green	Total	Maximum	Percent
2021											
Jan	5	2	2	5	5	5	2	5	31	80	39%
Feb	5	2	2	5	5	5	3	5	32	80	40%
Mar	6	5	2	5	3	5	4	5	35	80	44%
April	7	6	5	6	6	6	7	8	51	80	64%

Notes: Achievements: The Green staff and volunteers have made a major improvement to the rough areas and tee surrounds.

To do: Major rut in fairway needs to be immediately filled in to prevent member cart damage. Cart management required to assist barren parts of fairway to grow.

In General: Up from 44% to 64% which is a significant improvement.

Hole
11

	Tees	Fairway	Rough	Green	Paths	Bunkers	Surrounds Tee	Surround Green	Total	Maximum	Percent
2021											
Jan	5	N/A	1	7	3	5	6	3	30	70	43%
Feb	5	N/A	1	7	3	5	6	3	30	70	43%
Mar	5	N/A	1	8	3	5	6	3	31	70	44%
April	6	N/A	6	9	4	7	6	4	42	70	60%

Notes: Achievements: The Green staff have made a major improvement to the rough areas, bunkers and green surrounds.

To do: Cart paths need further work to fill in pot holes.

In General: Up from 44% to 60% which is a significant improvement.

Hole
12

	Tees	Fairway	Rough	Green	Paths	Bunkers	Surrounds Tee	Surrounds Green	Total	Maximum	Percent
2021											
Jan	5	2	3	6	2	5	5	5	33	80	41%
Feb	5	2	3	6	2	5	5	5	33	80	41%
Mar	6	2	1	8	2	6	5	5	35	80	44%
April	6	3	5	6	4	6	6	6	42	80	53%

Notes: Achievements: The volunteer work on rough areas has improved playability. Bunkers and Green surrounds have improved since last survey.
 To do: The fairway is one of the worst on the course and needs immediate cart management and fairway restoration.
 In General: Up from 44% to 53% but the fairway is a major disappointment with further cart management required.

Hole
13

2021	Tees	Fairway	Rough	Green	Paths	Bunkers	Surrounds	Surrounds	Total	Maximum	Percent
							Tee	Green			
Jan	6	5	5	4	4	4	6	5	39	80	49%
Feb	6	5	5	4	4	4	6	5	39	80	49%
Mar	7	6	6	4	5	5	7	5	45	80	56%
April	7.5	6.5	6.5	6	5.5	6.5	8.5	6	53	80	66%

Notes: Achievements: The rough areas have been significantly improved with strong mowing effort around all areas.. Good Greens staff work around the Green surround. Bunkers have improved since last survey. Paths have been repaired from rain erosion.
 To do: The fairway requires immediate weeding. Paths have been badly affected by the rain event and require further restoration. Fallen tree Tee surround needs removal.

In General: A significant improvement from last survey up from 56% to 66% .

Hole
14

2021	Tees	Fairway	Rough	Green	Paths	Bunkers	Surrounds	Surrounds	Total	Maximum	Percent
							Tee	Green			
Jan	6	5	2	6	6	5	4	4	38	80	48%
Feb	6	5	2	6	6	5	4	4	38	80	48%
Mar	6	7	3	8	5	5	4	5	43	80	54%
April	6	7.5	5	8.5	5	5.5	5	5.5	48	80	60%

Notes: Achievements: Volunteer and Green staff have significantly improved playability from the rough.
 To do: Black tee and Black tee surrounds are in poor condition. Rough on right and cart path in right rough need further restoration. Left of green to 15th Tee is in poor condition and requires a working bee.

In General: Up from 54% to 60% but the tee area, fairway and rough need further restoration.

Hole
15

2021	Tees	Fairway	Rough	Green	Paths	Bunkers	Surrounds	Surrounds	Total	Maximum	Percent
							Tee	Green			
Jan	7	2	2	7	5	2	4	5	34	80	43%
Feb	7	2	2	7	5	3	4	5	35	80	44%
Mar	7	5	3	7	5	4	4	5	40	80	50%
April	7	5	6	7.5	5	5	4	6.5	46	80	58%

Notes: Achievements: The rough areas have been significantly improved with strong mowing effort around all areas. Bunkers have improved since last survey. Paths have been repaired from rain erosion.

To do: Right of White tee needs major cleanup effort. The fairway requires cart management to allow barren areas a chance to grow back.

In General: A significant improvement from last survey up from 50% to 58% .

Hole
16

2021	Tees	Fairway	Rough	Green	Paths	Bunkers	Surrounds	Surround	Total	Maximum	Percent
							Tee	Green			
Jan	7	7	7	7	8	5	7	6	54	80	68%
Feb	7	7	7	7	8	5	7	6	54	80	68%
Mar	7	7	7	7	8	6	8	7	57	80	71%
April	7.5	7	7	7.5	9	7	8.5	7.5	61	80	76%

Notes: Achievements: The Tee surrounds have been cleared on the left opening up the hole. Bunkers have improved since last survey. Paths have been repaired from rain erosion.

To do: Fallen tree to back of green needs to be taken away.

In General: One of the best maintained holes on the course. Further improvement from last survey up from 71% to 76% .

Hole
17

2021	Tees	Fairway	Rough	Green	Paths	Bunkers	Surrounds	Surrounds	Total	Maximum	Percent
							Tee	Green			
Jan	6	1	2	6	3	3	4	4	29	80	36%
Feb	6	1	2	6	3	3	4	4	29	80	36%
Mar	6	1	2	6	3	3	4	4	29	80	36%
April	6	3	7	7	6	5	5	5	44	80	55%

Notes: Achievements: The path from the Blue tee has been cleared. The rough to right and left have significantly improved with strong volunteer and Green staff effort. Removal of fallen tree. Major restoration of beginning of fairway has commenced. Weeding of fairway has commenced. Grass bunker on left has been cleared.

To do: The fairway is in need of further action including cart management to allow barren areas a chance of regrowth. Paths have been badly affected by the rain event and require further restoration. Green surrounds and Tee surrounds (Black and Blue) need further effort.

In General: Big improvement from last survey up from 36% to 55%. Fairway is still one of the worst on the course and requires more effort.

Hole
18

	Tees	Fairway	Rough	Green	Paths	Bunkers	Surrounds Tee	Surrounds Green	Total		
2021											
Jan	2	4	4	6	5	5	3	5	34	80	43%
Feb	2	4	4	6	5	5	3	5	34	80	43%
Mar	2	5	6	6	5	5	3	6	38	80	48%
April	5	7	6.5	6	6	6	6	6.5	49	80	61%

Notes: Achievements: Significant volunteer effort has seen major improvement in rough areas, bunkers and Tee and Green surrounds.

To do: The Tees are close to the worst on the course (sand) despite the rain event and need restoration.

In General: Major improvement from last survey up from 48% to 61%.

Hit 'em long and hit 'em straight!!!

Saxon Williams